



Japan International Cooperation Agency

Thailand Office

31st Floor, Exchange Tower, 388 Sukhumvit Road, Klongtoey Bangkok 10110
TEL: (+66) 2-261-5250 FAX: (+66) 2-261-5262 [URL: http://www.jica.go.jp](http://www.jica.go.jp)

PRESS RELEASE

Contact

- JICA Thailand Office: Mr. Taniguchi / Ms. Jamaree

November 24, 2010
JICA Thailand Office

Grand Opening Ceremony of Bhumibol I and Bhumibol II Bridges

Bangkok, Thailand: His Majesty the King Bhumibol Adulyadel presided over the opening ceremony of the Bhumibol I and Bhumibol II Bridges, on 24th November 2010, which cross Chao Phraya River at Phra Pradaeng District, Samut Prakarn Province. The two bridges, formerly known as the Industrial Ring Road Bridges, were constructed with a Japanese Official Development Assistant (ODA) Loan.

The Royal-Initiative Industrial Ring Road Project provides a new route, predominantly for truck traffic, between industrial areas in Samut Prakarn Province, the south and south-west of Bangkok, and the Port of Bangkok. This route comprises a new road and bridge network linking Bangkok Port with the existing Poochao Saming Phrai Road to the south, Suksawat Road to the west, and RAMA III Road to the north, together with upgrading the existing Thang Rotfai Sai Kao Pak Nam Road, linking the Port of Bangkok with Poochao Saming Phrai Road on the east side.

Last year's survey shows that daily traffic volume is more than 50,000 car units for each bridge. 85% of the interviewees perceive an improvement in traffic congestion. Thus, this project has contributed greatly to enhancing transportation efficiency and to alleviating traffic congestion in the project areas.

A number of Japanese ODA Loans have been provided to support the construction and rehabilitation of 14 bridges out of a total of 20 bridges crossing the Chao Phraya River in the Bangkok Metropolitan Area.

At present, Japan International Cooperation Agency (JICA) is extending an ODA loan to finance the Chao Phraya River Crossing Bridge at Nonthaburi 1 Road Construction Project. Signed on September 28, 2010, the Loan Agreement for 7,307 million Yen will support construction of the country's first extra-dosed pre-stressed bridge. The Project is expected to be completed in October 2013.

*For more information, please contact:

JICA Thailand Office: Mr. Hajime Taniguchi, Ms. Jamaree Yamklinfung

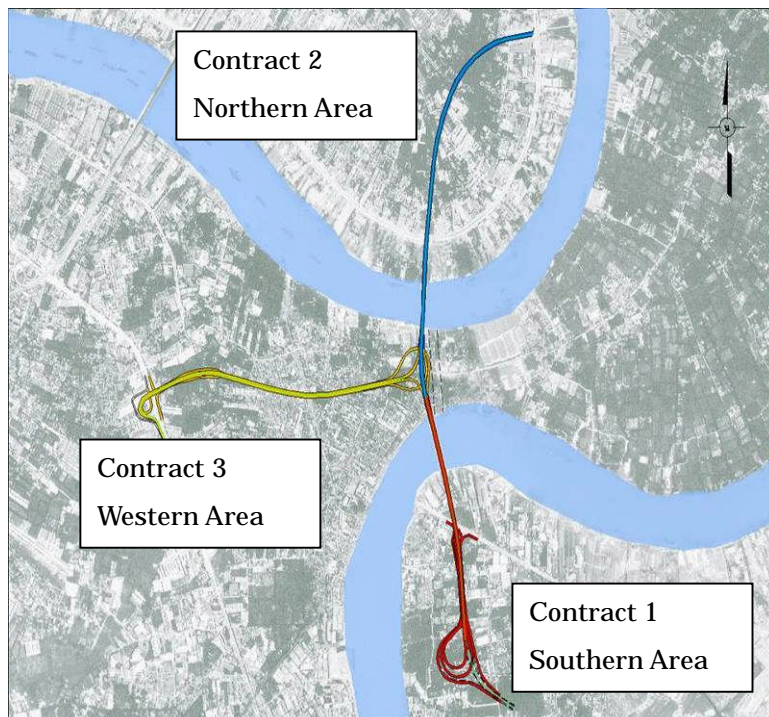
Tel: 02-261-5250 / Fax: 02-261-5262 / e-mail: Taniguchi.Hajime@jica.go.jp; Jamaree.TI@jica.go.jp

Industrial Ring Road Construction Project



Executing Agency: Department of Rural Roads, Ministry of Transport
Loan Agreement No: TXXII-4
Loan Signing Date: September 30, 1997
Loan Amount: 14,887,000,000 yen
Total Disbursed Amount: 14,872,127,873 yen
JICA Financed Portion: Civil Work (approximately 60% of the total construction cost)

Project Outline:



The Industrial Ring Road Project provides a new route, predominantly for truck traffic, between industrial areas in Samut Prakarn Province, South and South-West of Bangkok, and the Port of Bangkok. The project was divided into three contracts; Southern Area, Northern Area and Western Area Contracts.

Contractors:

Contract 1: TNNs JV
(Taisei, Nishimatsu, NKK, SinoThai)
Contract 2: TNNs JV
(Taisei, Nishimatsu, NKK, SinoThai)
Contract 3: Tokyu-Kajima-Unique JV)

Commencement of Work: October 2001
Opening for Public Use: 19 September 2006
Official Opening Ceremony: 24 November 2010 (expected)
Official Name: **Bhumibol I** (North Bridge)
Bhumibol II (South Bridge)